



Welcome to the World of InstaCode

InstaCode is the essential product for every locksmith worldwide. No matter which country you operate in, no matter what machinery or tools you use, whether you're doing automotive, domestic or commercial work, InstaCode is the only code program you'll ever need.

Imagine being able to access the largest database of key codes instantly. With InstaCode you can. InstaCode has undergone an evolution over the last 15 years to become the most comprehensive key data software available. Today it is the first choice for many of the leading security agencies & organisations. InstaCode is easy to install and operate, **a complete software package designed by locksmiths for locksmiths.** It is the way to open doors to new opportunities, taking your business to new levels of efficiency and professionalism.

Features:

- InstaCode includes over 6000 code series, and has the largest collection of data available. InstaCode is an intuitive user interface using predictive text entry. The program has the broadest range of search criteria and the fastest search available in any code software including searching by code, manufacturer, vehicle make, model and year, card number, key blank reference, key type etc.
- Key blank cross-references, includes 36 Key Blank manufacturers and over 70,000 references.
- Pictures of key blanks and key blank profiles.
- Support for the widest range of key cutting machines.
- Printouts of whole code series (for use in you van).
- Ability to search for bittings across a range of code series.
- Car opening instructions for popular models. (Optional Extra)
- Complete ASP catalogue online, cross references against make and model, with most models featuring colour pictures of the ASP locks and service components.
- Key Remote Programming procedures for popular models. (Optional Extra)
- Transponder key information and programming techniques. (Optional Extra)
- Client key code storage & retrievals.
- InstaCode supports a wide range of locksmith tools and is not specific to any particular manufacturer.
- Live updates are available periodically via the Internet as new code series and information comes to hand.
- Licensed to install on three machines at the one premises, with no security tag/dongle required.
- InstaCode is multilingual (English, French, Spanish, Italian, German).

InstaCode software has the ability to download to the following machines for direct communication or provide key cutting information for:

BIANCHI 993	BIANCHI 994	KEYLINE DEZMO
KEYLINE VERSA	KEYLINE SIGMAPRO	KEYLINE NINJA
KEYLINE NINJA LASER	KEYLINE NINJA TOTAL	ILCO EZCODE
ILCO ULTRACODE	ITL 9000 AND 950	HPC BLUESHARK
HPC CODEMAX	ILCO ORION ECM 200	JMA PROCODE
JMA XCODE	MIRACLE A5	MIRACLE A6
MIRACLE A9	MIRACLE A9P	MIRACLE A9S
SILCA UNOCODE VERSION I, II,	299 and 399'S	SILCA QUATTROCODE
SILCA TRIAX E.CODE	SILCA TRIAX QUATTROCODE	SILCA VIPER
SILCA FUTURA (UNLOCKED BY SILCA)		

Key cutting information for:

FRAMON
ILCO UNIVERSAL II

CURTIS
HPC 1200 PUNCH

A1
HPC BLITZ (1200CM)
IMPROVED QUALITY & ACCURACY ON
CODE CARD PRINTOUTS

We are more confident than ever that you will find InstaCode to be "The World's BEST Code program", and that InstaCode is without compromise in terms of quality, ease of use, speed and quantity of information contained within.

COMPUTER SPEC:

The minimum computer hardware requirements for InstaCode are:

- Pentium CPU
- 1GB of free (available) RAM
- 350MB of available Hard Disk Drive space
- Mouse or other pointing device
- One of: Windows 10, Windows 8/8.1, Windows 7, Windows Vista, Windows Server 2016, Windows Server 2012/2012 R2, Windows Server 2008 or Windows Server 2003.
- The minimum display resolution required is 1024 x 576 (*Higher display is required for complete display of some Dimple and Bit series*) with 16 bit colour (*sometimes called 64K colors or 65536 colours*) or greater.
- Internet Explorer 7 or later.
- A Windows supported printer is optional.
- If you run several applications simultaneously you will require more RAM.

These are the minimum requirements, and good performance is dependent on sufficient RAM and adequate CPU speed.



The most comprehensive key data software available!

ANNUAL SUBSCRIPTION:

Instacode software requires an annual subscription and can be used on one computer.

Additional licenses can be purchased by contacting the Sales Team on 01902 366448 (InstaCode Item Number: KM2010).

This subscription is **for 12 months only**. A renewal notice will appear allowing approximately 20 days for renewal. After this time, the program will disappear. All updates for the year are included in the subscription package.

TECHNICAL SUPPORT & INSTALLATION ASSISTANCE:

If you require assistance with installing the software on your computer or have any technical queries, please call us. Alternatively, you can call Instacode's FREEPHONE support number 0800 9172694 or email support@whsoftware.com.

USER GUIDE

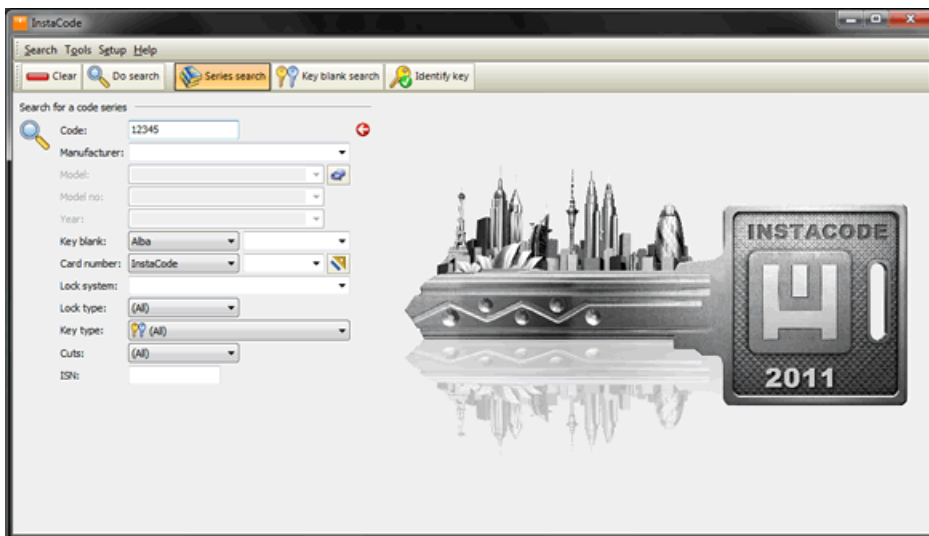
FURTHER HELP / GUIDANCE IN USING YOUR NEW INSTACODE PACKAGE:

Let's take a walk through some of InstaCode's functionality. We will show you firstly the standard features within InstaCode, then follow with the added features InstaCode offers you!

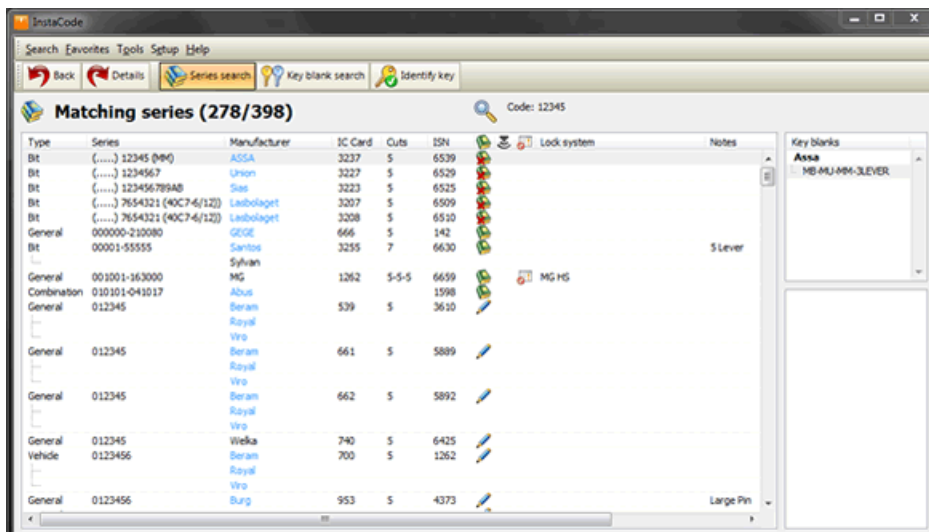
InstaCode's opening view allows you to search for any combination of key code, manufacturer, model and year, key blank, card number or lock type.

The selections for manufacturer, model and key blank are great - as you type in the first few characters they find and display the nearest matching entry, so you don't need to know how to spell some of those complex manufacturer names or do lots of typing.

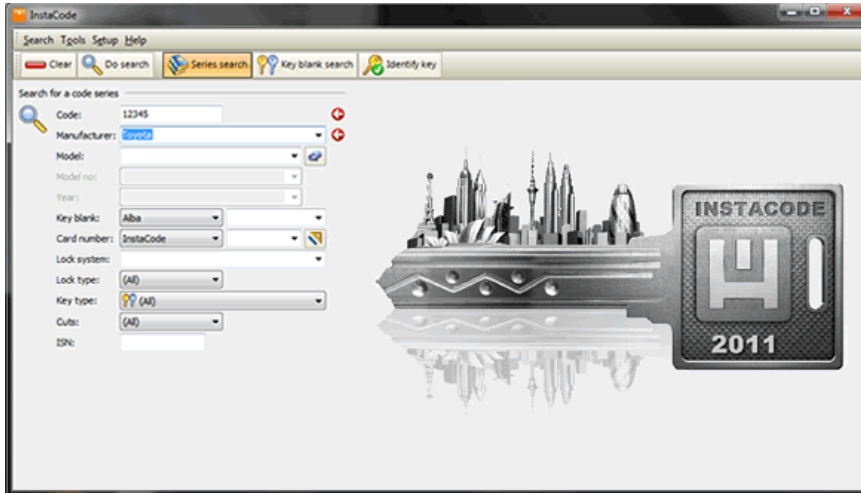
We're going to look for the Toyota code 12345, but for now lets put in just the code 12345 and leave the other search fields blank.



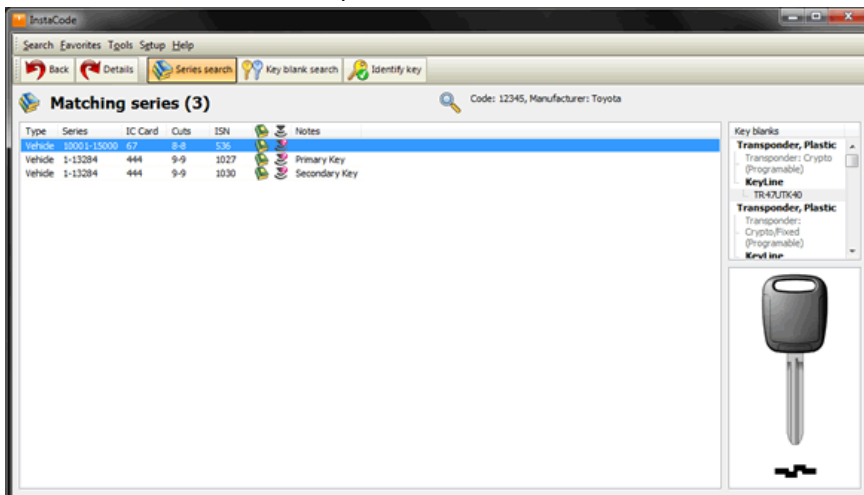
Here's the results. As you can see, there are quite a few code series that contain the code 12345. We've moved the highlight down to the Toyota series that we are looking for, but rather than opening this series, lets go back to the search screen and try a better search.



OK, lets try searching by code 12345 and manufacturer Toyota.



And here are the results... As you can see, it's much less to look at!



Before we open this series, lets see what it looks like if you were to print the whole series.

Note: We've only shown the top part of the printout here - not the whole thing.

WH Software 536
10001-15000
 Chevrolet, General Motors (GMC), Geo, Hino Truck, Holden, Toyota Card: 67
max:10

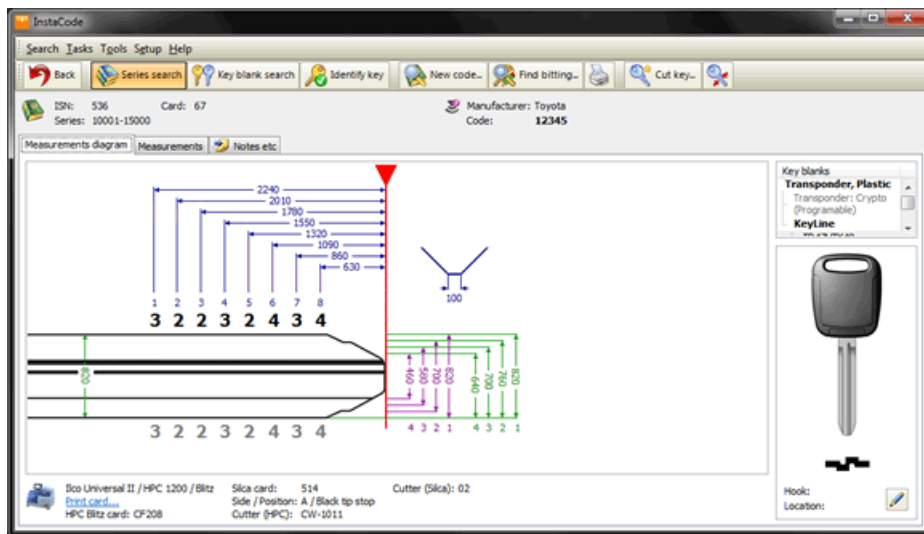
Key blanks

Nash: N150
 Anix: N150P
 Borkey: 1023, 102300T10, 102300T30, 1023P887
 Canas: TOY2, TOY2P

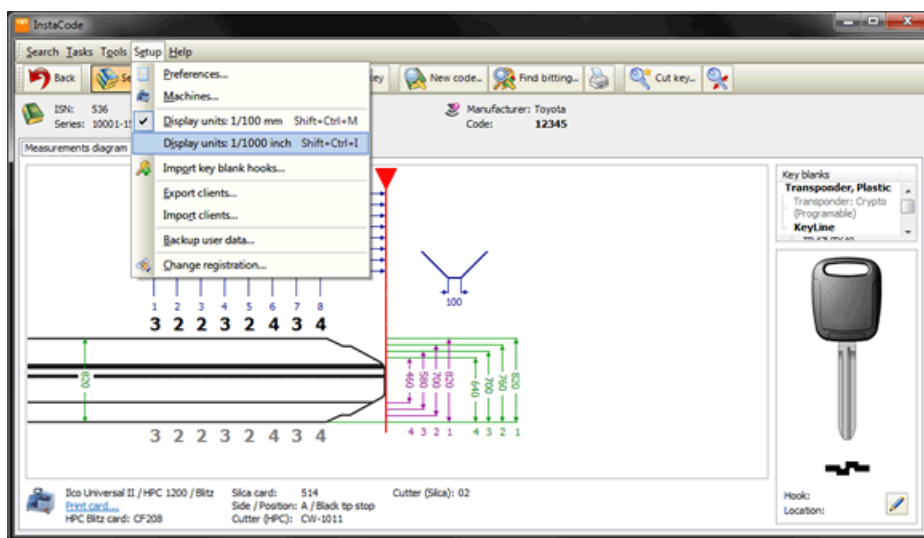
Machine data
 Site card: 514, HPC Bitz card: CF208

Code	Bitting	Code	Bitting	Code	Bitting	Code	Bitting	Code	Bitting	Code	Bitting
10001	22343342	10002	33443324	10003	22244321	10004	21131221	10005	23443431	10006	32311121
10007	31312221	10008	32212421	10009	32131221	10010	12343231	10011	32231121	10012	11223121
10013	23122211	10014	11242221	10015	22213221	10016	23343134	10017	23343442	10018	32343434
10019	23212342	10020	21134223	10021	22431121	10022	34324434	10023	32343431	10024	24311221
10025	22312221	10026	22112331	10027	13111042	10028	33221321	10029	23313443	10030	23343431
10031	23444331	10032	34433342	10033	34234432	10034	23312221	10035	22112324	10036	12313434
10037	33112221	10038	21323311	10039	34344324	10040	32443431	10041	24231221	10042	32343342
10043	11242224	10044	23343324	10045	34343322	10046	33343342	10047	24443324	10048	22231121
10049	33343442	10050	34343431	10051	11231243	10052	23224211	10053	22132124	10054	34443331
10055	24211121	10056	22133434	10057	32122433	10058	34443231	10059	32432311	10060	12431324
10061	33423221	10062	13323324	10063	32344431	10064	11213234	10065	23112221	10066	32132434
10067	33443134	10068	33112442	10069	32242221	10070	21343111	10071	34324234	10072	22131342
10073	23231121	10074	33344211	10075	24312442	10076	34244431	10077	32343213	10078	34213224
10079	22421334	10080	13232432	10081	22121213	10082	32321211	10083	12212342	10084	31342131
10085	23312434	10086	13212424	10087	22431221	10088	32112425	10089	23132121	10090	11323133
10091	12122213	10092	34343231	10093	34431131	10094	31132431	10095	22132342	10096	33423431

OK, back to the results screen, and we'll open the Toyota series on code 12345. Look at all that information. An improved graphical layout of the spaces, depths, alignment, machine information (more on this later), notes, key blanks, key blank profile picture.

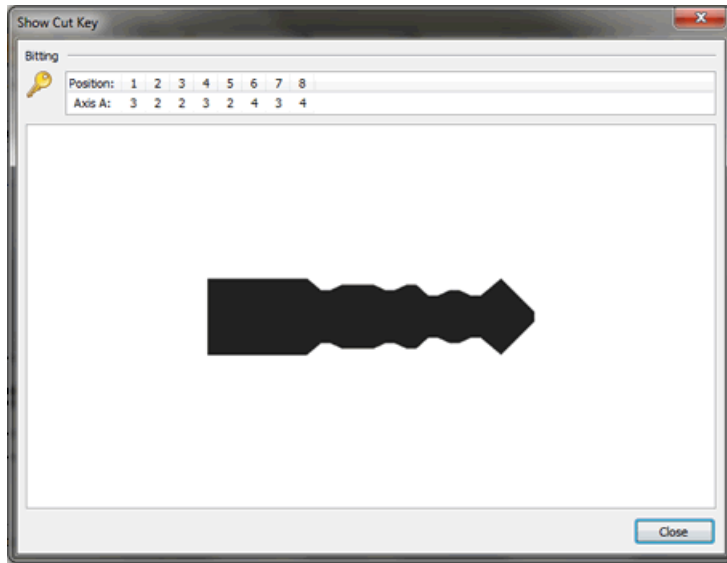


Want to see that in inches instead of mm? - no problem, simply change your preferences in the Setup menu item from the top menu bar.



What if I want to cut this code on a manual machine, but the machine is not next to my computer? No problem. Click "Print" on this screen and you get all the information that you need to cut this code, on a single sheet of paper.

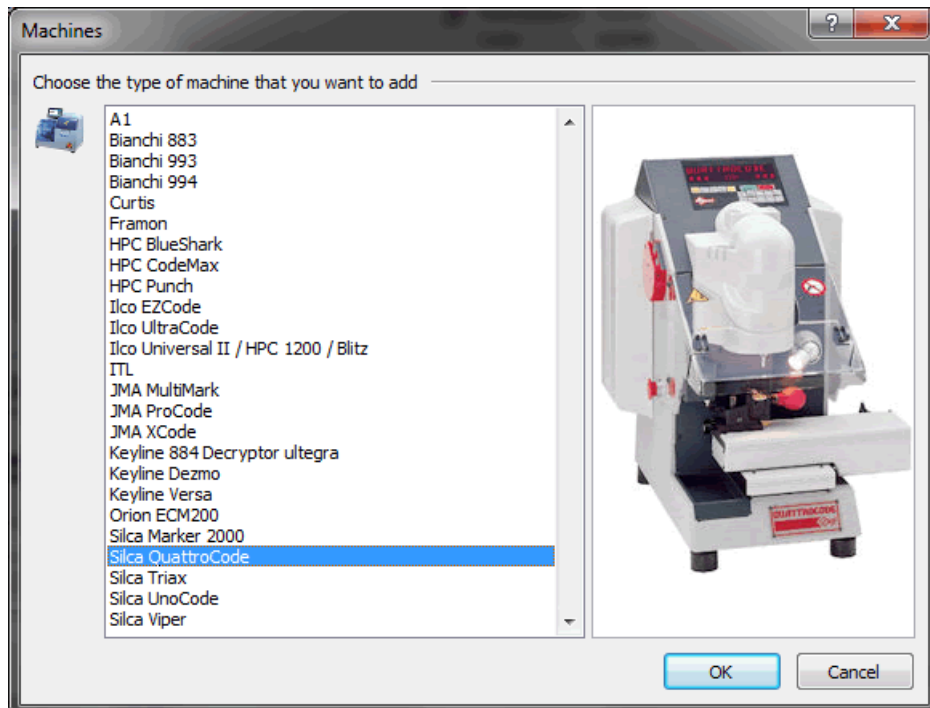
Just to make sure that the key looks right after we have cut it, let's select "Show Cut Key" from the "Tasks" menu and get a picture of how the cut key should look.



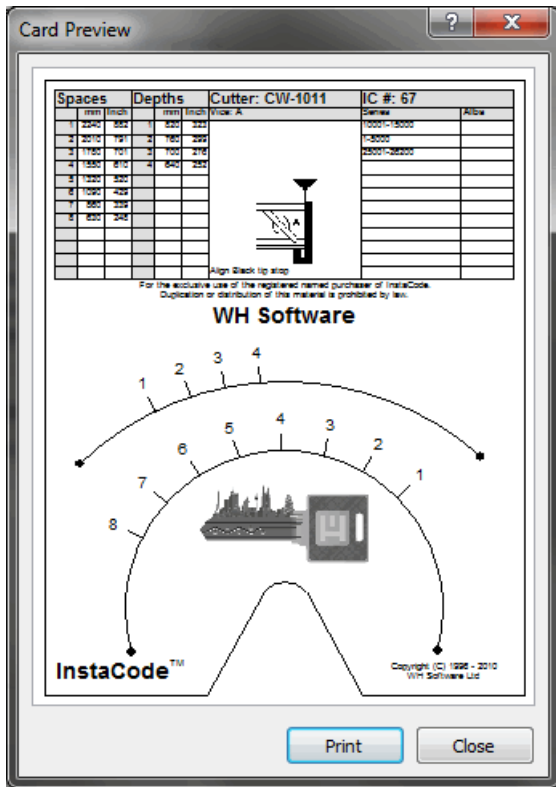
A little earlier, we promised that there would be more to come on machines. Here it is...

Support for the widest range of both electronic and manual machines available in any code program.

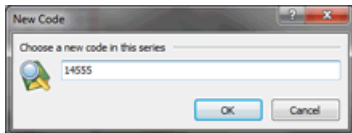
Yes, InstaCode communicates with all the manual and electronic key machines shown below.



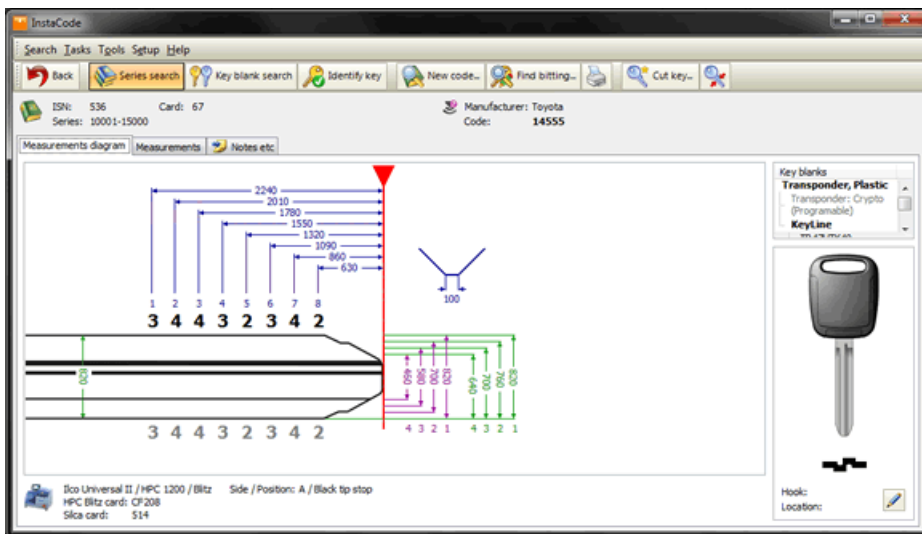
Need a card for an Ilco Universal II, HPC 1200, Blitz or Punch machine - then print it. Here's the card for both the Ilco Universal II and the HPC 1200.



and click the "New Code" button and up comes a window for you to Suppose that you need a different code in the same series. Go ahead enter the new code. We'll choose 14555 for this example.



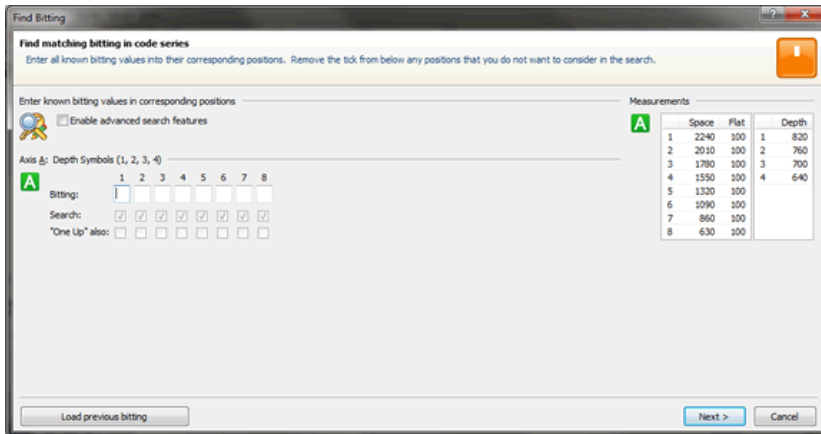
And here it is, complete with new code and new bitting.



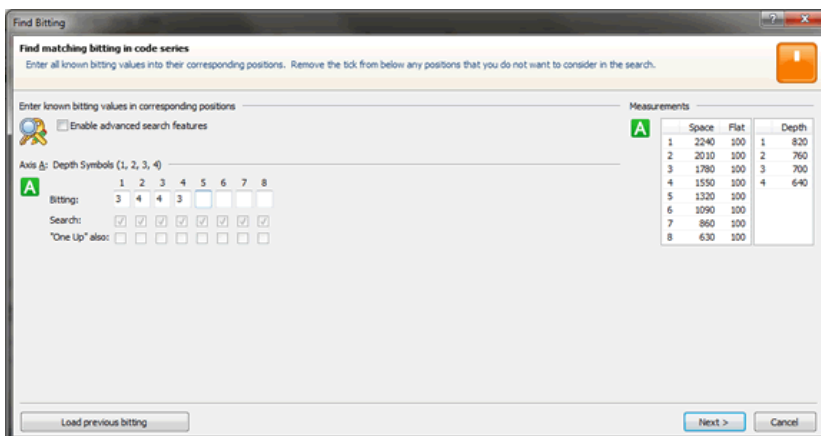
What do I do if the customer brings in just part of the key, or you've decoded part of the bitting for a car door lock, or you simply want the code from a bitting that you are entering?

No problem.

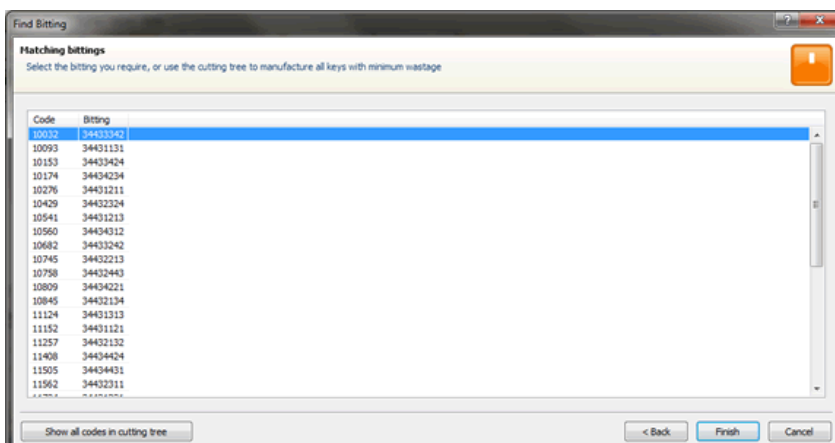
Let's look at partial cuts. Click the "Find Bitting" button



Type in the bittings that you can read off the damaged key...



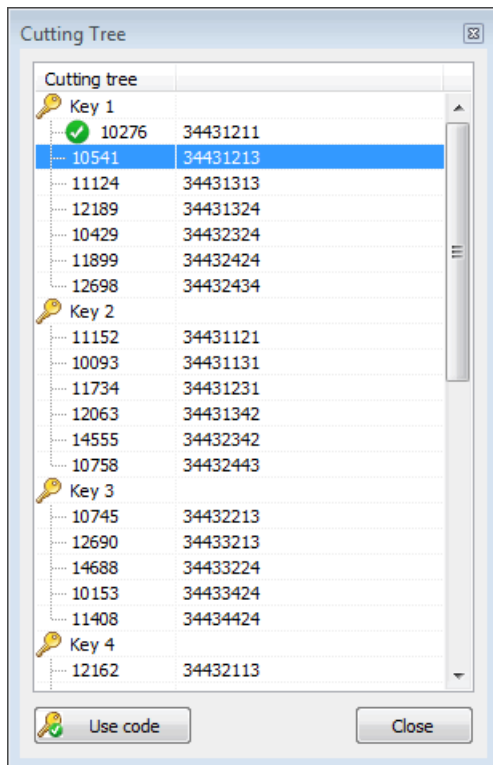
Choose "Find" and up come all the possible results.



Now that's a lot of keys to cut, so let's get InstaCode to help us.

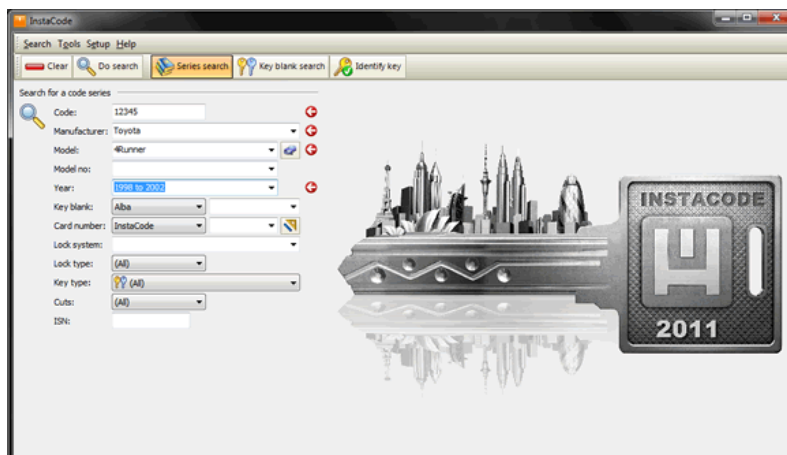
Click on the "Cutting Tree" button and InstaCode will show you how to recut multiple codes onto the same key blank so you can test each one and use a minimum number of key blanks. Much less wastage.

Want to see the cutting tree on a sheet of paper so you can take it with you? Easy, just click the "Tasks" menu item from the top menu bar, then "Print".

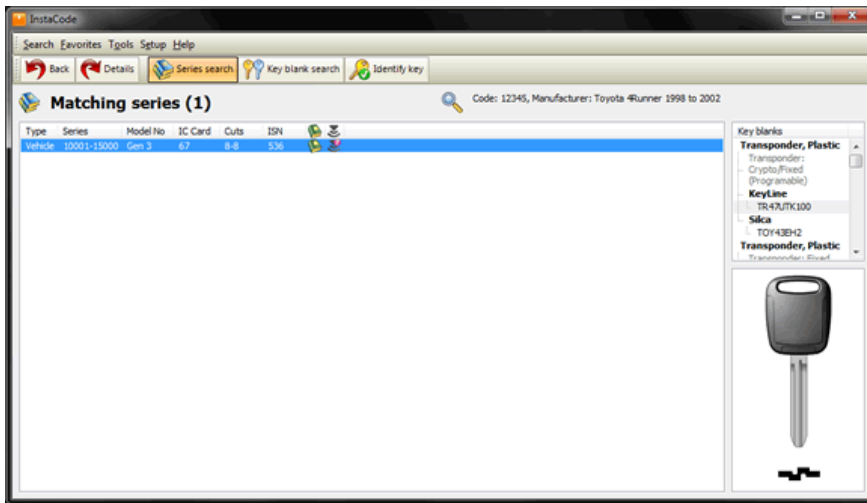


Other features in InstaCode

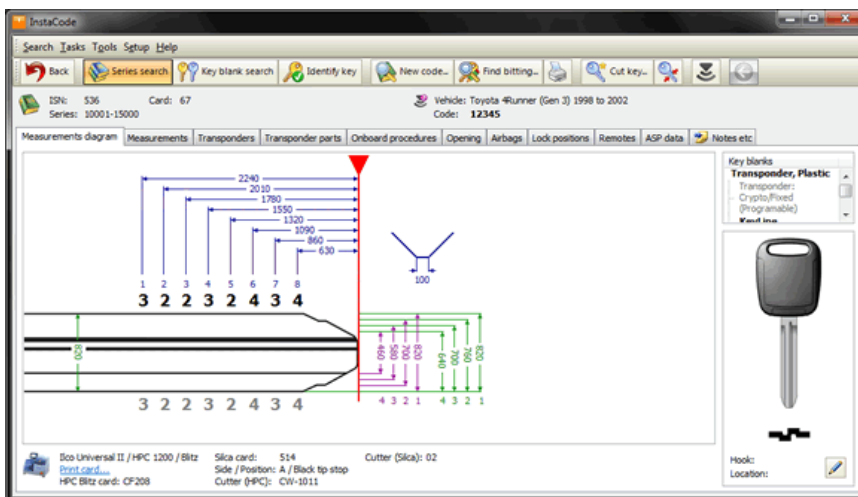
To access the other features in InstaCode - transponder programming instructions, the ASP data, car opening instructions, airbag safety, lock wafer positions we need to search using the information we have available to us (manufacturer, model and year of vehicle in this example). We will enter the code 12345, with the manufacturer Toyota, model 4 Runner, and year 1998 to 2002.



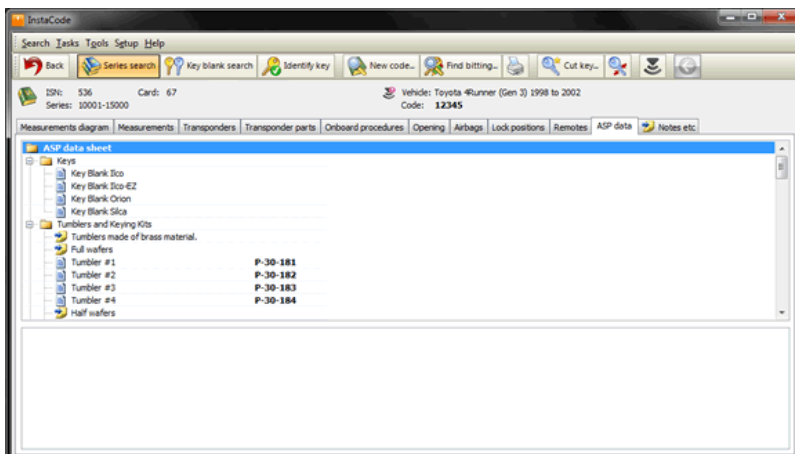
And here are the results... As you can see, only one series is relevant for the search criteria entered!



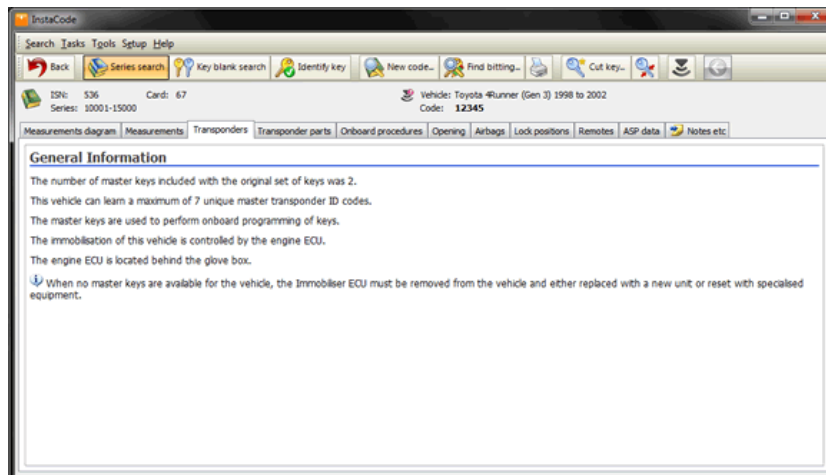
Now on opening this Toyota series. Look at all that information. An improved graphical layout of the spaces, depths, alignment, machine information, notes, key blanks, key blank profile picture. You will also see the buttons to access transponder programming instructions, opening instructions, ASP data and Notes. We will show you each feature now.



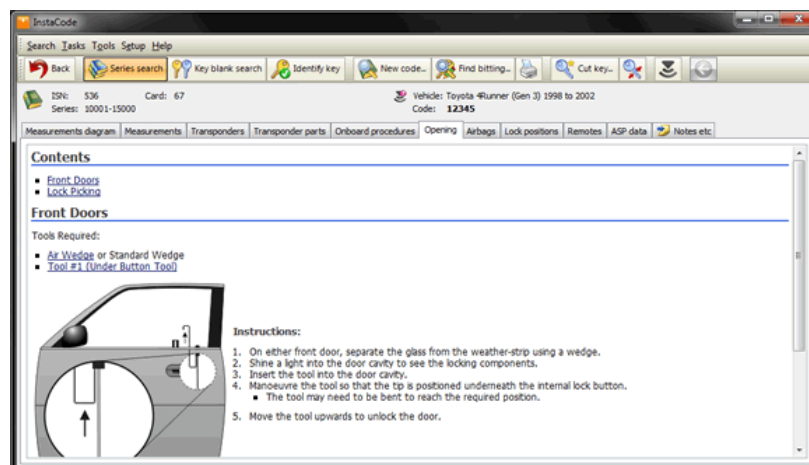
We will select the "ASP data" tab - this displays the relevant locks on the vehicle, but pressing the + it will expand the tree to see the products within that tree. We have highlighted an ignition lock C-30-409, which shows a picture of what the lock looks like for easy identification.



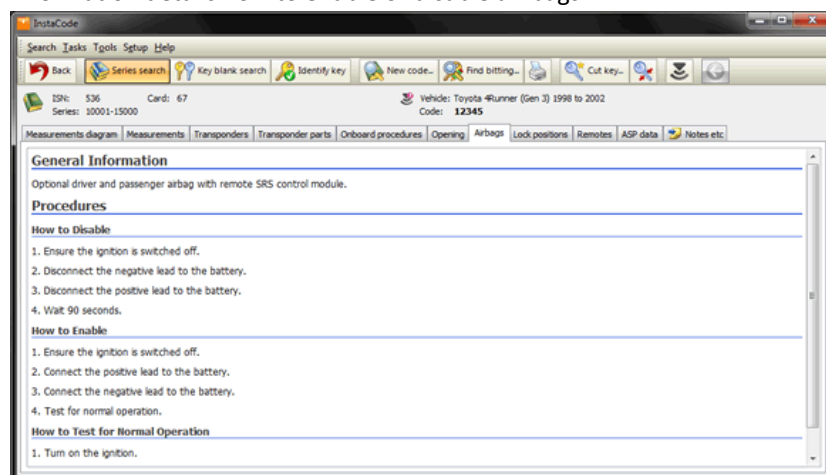
Next, we select the "Transponders" tab - this gives step by step instructions on key duplication and in-car programming that is required for this particular vehicle.



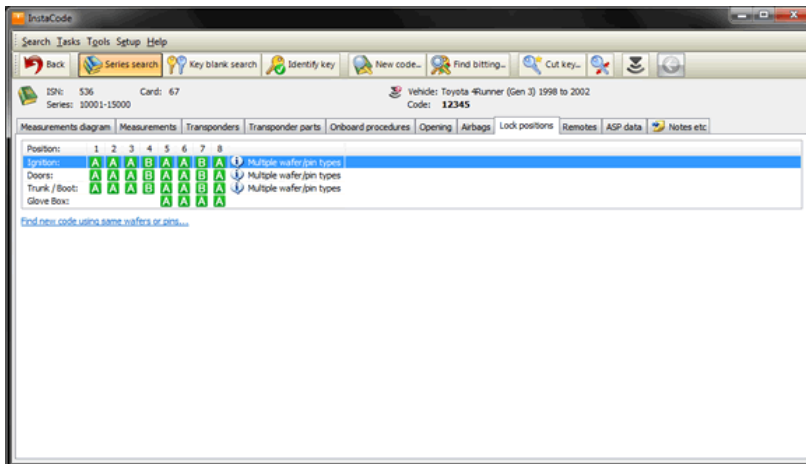
Opening Instructions is the next option. This shows you the picking method required, along with entry methods to take, the tools required to do so and also displays a range of car opening tools used.



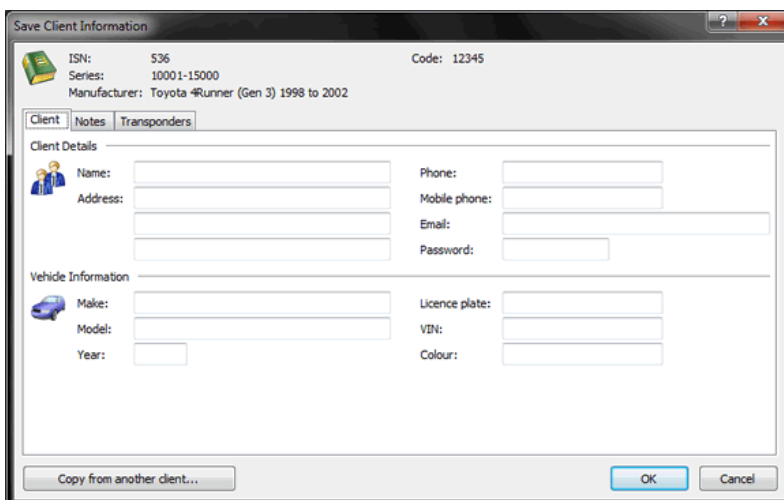
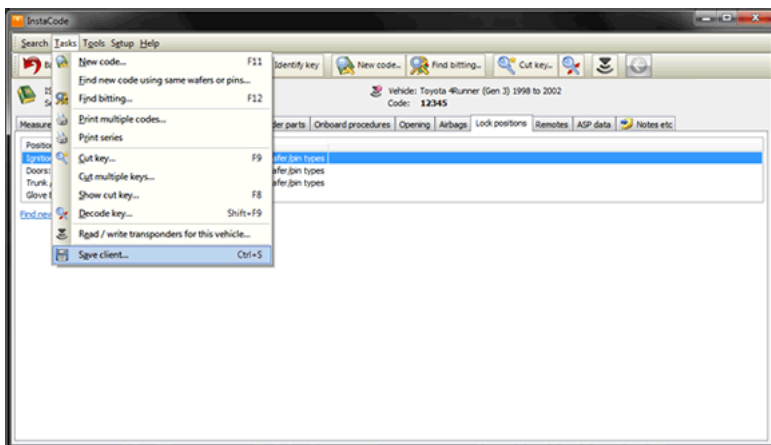
The Notes button contains such information as Air Bag information and Lock Wafer Positions. Air Bag Information details how to enable or disable air bags.



Lock Wafer Locations displays just that....



Last thing for this peek at InstaCode, click on the "Save Client Info" button and record your customer's information so that next time they come in you can make a replacement key.





DAVENPORT BURGESS, 47 Wednesfield Road, Willenhall, West Midlands, WV13 1AL

t: 01902 366448

f: 01902 602472

e: sales@davenport-burgess.com

w: www.davenport-burgess.com